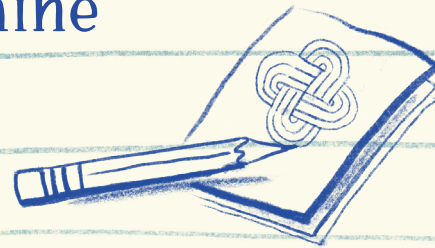


Set It Up; Knock It Down

How to Build a Rube Goldberg Machine



“You have to have courage to be a creator.”
—Rube Goldberg

① START AT THE FINISH

What is the task to accomplish? At the end of the chain reaction, what should happen?

② CHOOSE AN APPROACH

- The methodical approach of plotting and planning each of the steps, interactions, and triggers
- The trial and error approach of setting things up and knocking them down

③ BRAINSTORM

What items will you incorporate?
What will be the steps in the chain reaction?

④ SKETCH

A rough drawing of which object will roll into what, triggering which object to fall, etc. is a helpful way to refine your ideas.

⑤ BUILD

Start putting your machine together, modifying along the way.

⑥ TEST

Try the whole thing out! Then identify problems and possible solutions.

⑦ LEARN

Set it up. Knock it down. Learn from it. Failure is the key to eventual success.

⑧ EMBRACE MURPHY'S LAW

If anything can go wrong, it will. Count on it. Be prepared to troubleshoot. And then don't worry about it.

